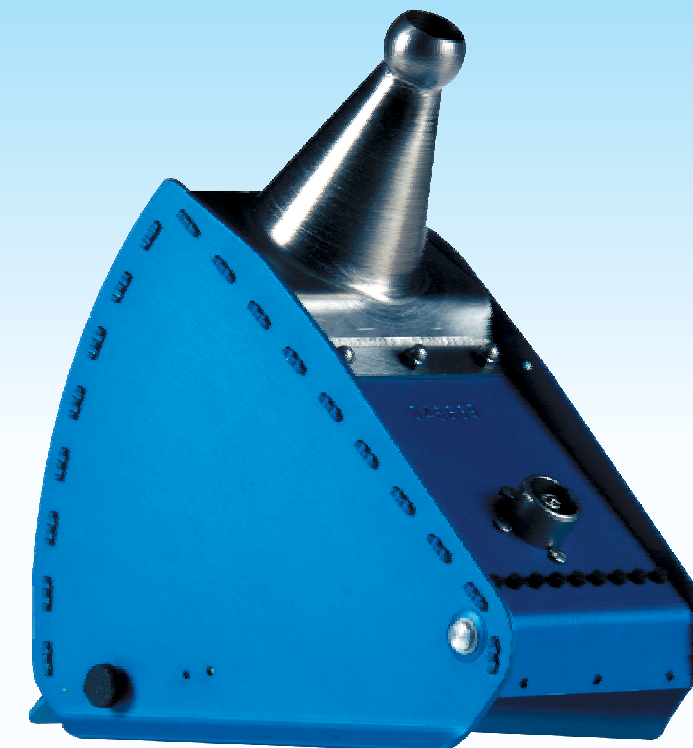
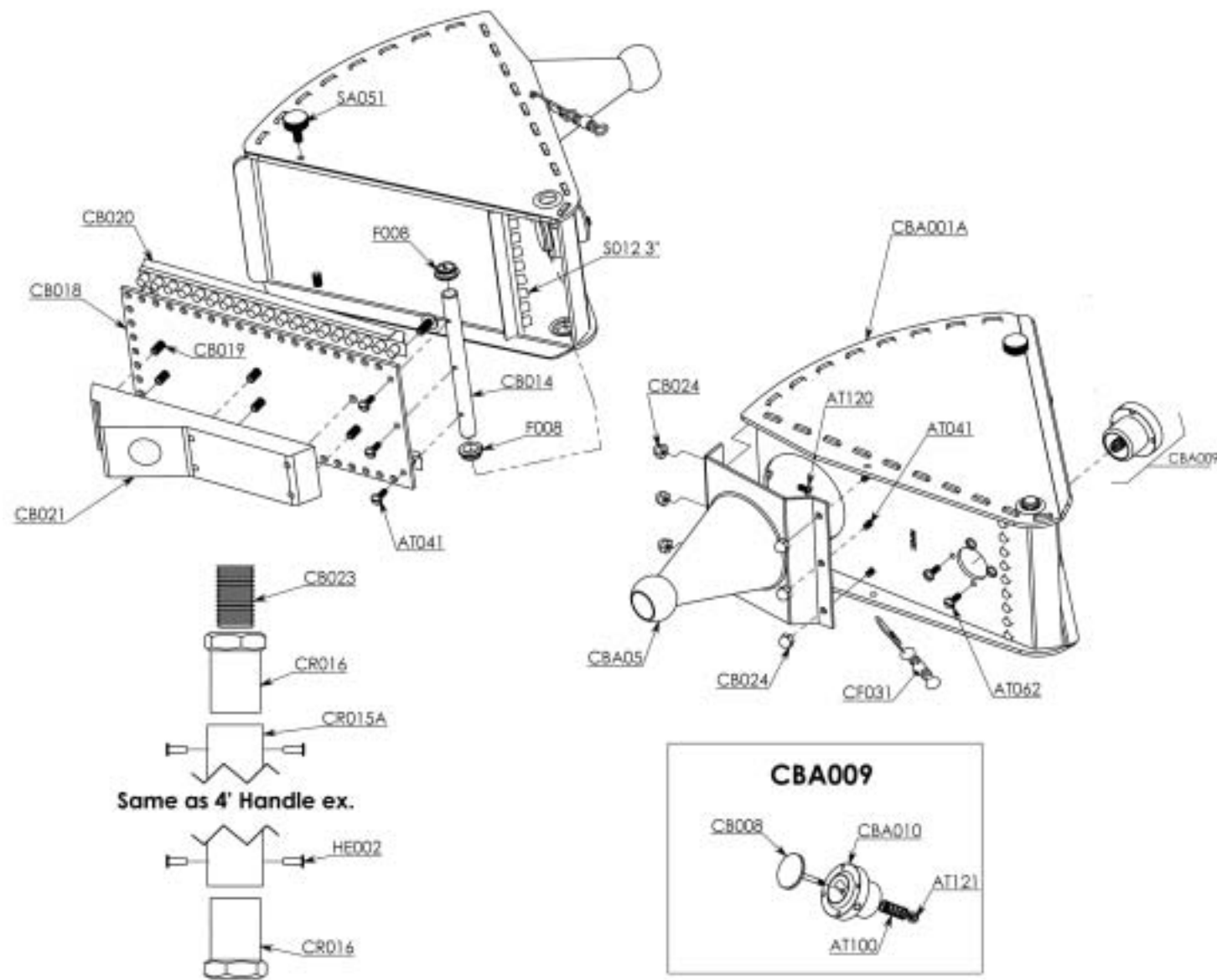


TAPEPRO DRYWALL TOOLS



TAPEPRO
DRYWALL TOOLS

TAPEPRO CORNER BOX

For further information contact: WALLBOARD TOOL COMPANY PTY LTD: PO BOX 2508 Burleigh MDC QLD 4220 Australia.
Telephone: 1300 653 177 Facsimile: 1300 657 442 Email: sales@wallboardtools.com.au Website: www.wallboardtools.com.au

TAPEPRO CORNER BOX



The Tapepro Corner Box is designed to be used with the Tapepro Corner Finisher to apply a finishing coat to all 90° internal angles. This is one of the last procedures and will cover the tape with joint compound and feather the edges of the compound onto the tape.

BEFORE USE

- > Ensure that the Tapepro Corner Box is free from any dry joint compound. **(CB-1)**
- > Check that both the pressure plate and the filler valve move freely.



USING THE TAPEPRO CORNER BOX

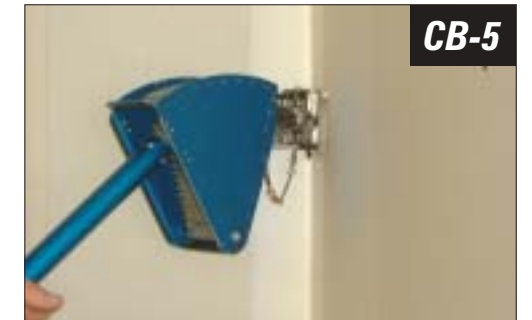
1. Fill the Tapepro Corner Box by removing the nozzle from the box filler which is attached to the loading pump. Insert the Tapepro Corner Box filler valve into the box filler. **(CB-2)**
2. Pump until the box is full.
3. Snap the Tapepro Corner Finisher onto the nose cone of the Tapepro Corner Box. Ensure the swivel chain is attached, to reduce the risk of damage to the Tapepro Corner Finisher. **(CB-3)**
4. Place the Tapepro Corner Finisher at the top of the internal. Apply pressure and pull the Tapepro Corner Box down the internal to approximately 600mm from the bottom of the joint. **(CB-4 & CB-5)**
5. Turn the Tapepro Corner Box around and starting from the bottom of the joint run up the internal. **(CB-6)**



CLEANING

Your Tapepro Corner Box should be cleaned after every use to maximise lifespan and maintain optimal performance.

1. Fully open the Tapepro Corner Box by loosening the thumb screw on the side of the box and thoroughly clean with a hose and stiff brush.
2. Ensure all joint compound is removed from the box and nose cone



MAINTENANCE

All replacement parts are available from your local plasterboard distributor or Wallboard Tool Company. For your nearest distributor please call Wallboard Tool Company on 1300 653 177 or visit our website at www.wallboardtools.com.au

WARRANTY

All manufacturing faults are covered under the warranty. All non wear parts are covered under a 3 year warranty.

